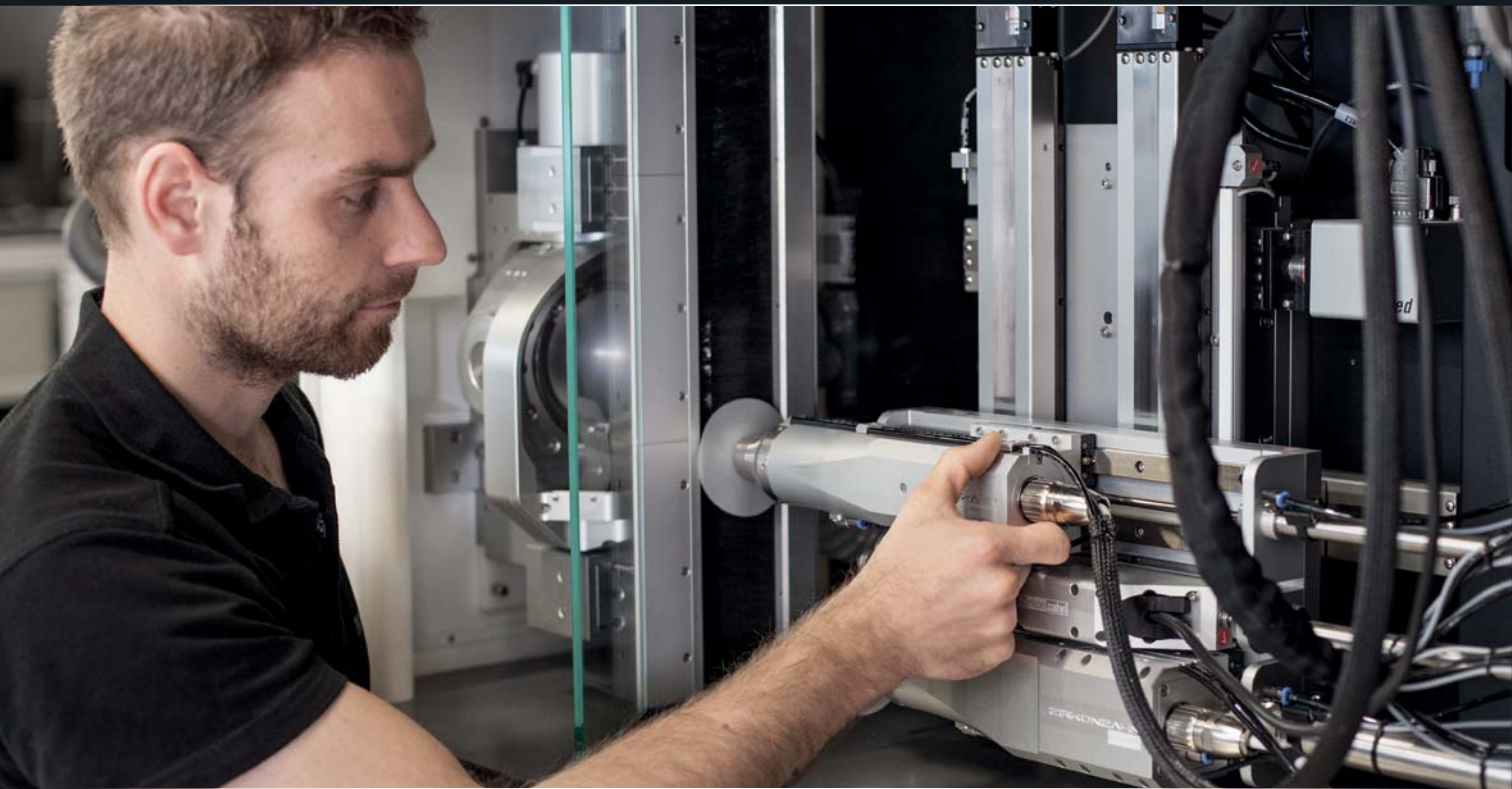




CAD/CAM MILLING INSTALL

The initial installation and startup help for NEW Zirkonzahn CAD/CAM system users/buyers



Europe



2 days

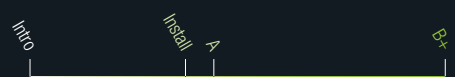


€ 1.500.- (excl. VAT)

BRIEF INFORMATION

Arrival and departure as well as the overnight stay of the course instructor will be organised by Zirkonzahn. The resulting costs are not included in the course price and will be invoiced separately.

LEVEL



CAD/CAM MILLING INSTALL

The initial installation and startup help for NEW Zirkonzahn CAD/CAM system users/buyers

Schedule

- Installing and starting the system (if necessary)
- Introduction to the software package, together we will finish a case:
 - Scanning of a die model and an antagonist
 - Virtual creation of a framework/bridge construction
 - Positioning the job in the blank (nesting)
 - Transferring data into the milling software
- Operating the milling software - analysing errors during the milling
- Cleaning the milling unit
- Milling materials and milling burs from our range of products
- Shortcuts
- Calibrating the milling unit and scanner
- Overview of spare parts - theoretical explanation

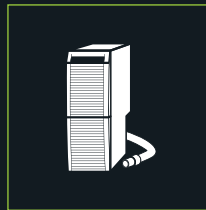
Checklist for the preparation of your CAD/CAM Milling Install



Position the system in the desired location



To use the camera in the milling unit, the distance between your PC and the milling unit must not exceed 2-3 meters, or you must use a Lan-switch Adapter (also available via Zirkonzahn)



Prepare extractor unit



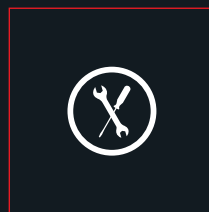
Provide compressed air with a constant minimum of 6.5 bar (120 L/min with clean, oil-free and dry air)



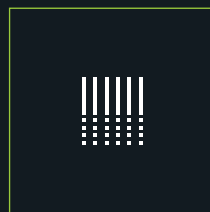
Ensure a fast internet connection via LAN (min. 16 Mbps)



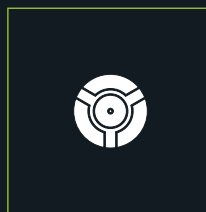
Call our Technical Customer Support (+39 0474 066 630), which will activate your modeling software dongle



IP addresses can be modified only by tech support: +39 0474 066 630



In case of a milling unit with wet processing function, prepare 20 - 25L of distilled water



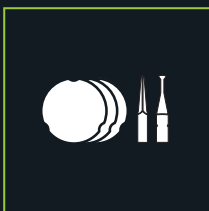
Check the model holder ...



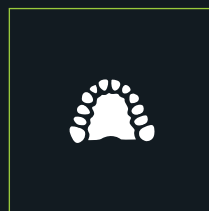
... and, if necessary, order the matching support and expandable materials



Prepare a fully dentate and already articulated model for the articulator's registration



Prepare working tools and milling material



Prepare models (max. 4 single crowns or one 4-unit bridge on dies)



Recommendation: We recommend a maximum of 3 active participants

All information is subject to change. Errors and omissions excepted. Version: 08/06/2018