

Zirkonzahn[®]

Human Zirconium Technology



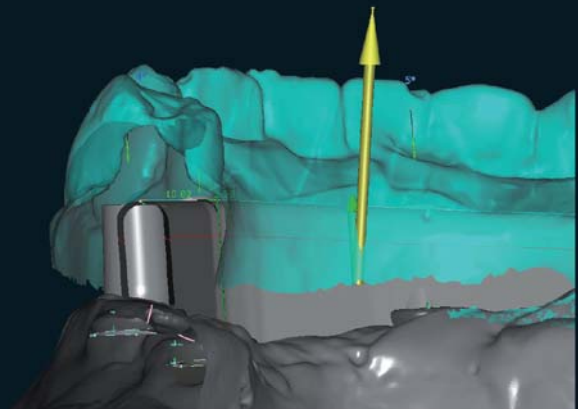
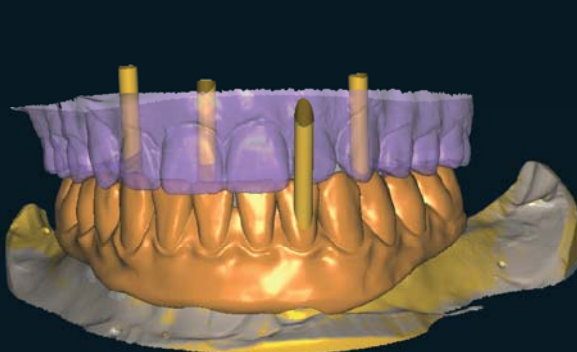
100% PRETTAU[®] ZIRCONIA - MADE BY CAD/CAM

“Perfection through perseverance“ Enrico Steger

Prettau® bridge cemented onto titanium bar for occlusal screw retention

In situ, space for this restoration was quite limited. To make things worse, one screw access channel emerged through the labial of LL2. In contemplating a solution for a case like this we opted for a primary titanium bar which was to be cemented into the secondary bridge structure for insertion as 'one-piece' and fastened by four occlusal screws. As first step the primary and secondary structures were made in PMMA, according to the original study model. Then new diagnostics were created, replacing the original set of teeth with a better selection from the "Natural Collection" archive. Following, the primary titanium bar and the secondary Prettau® Zirconia bridge structure were manufactured.

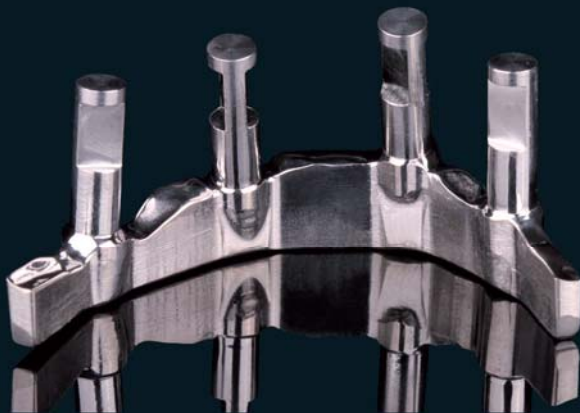
Prior to colouring the frame with Colour Liquid Prettau® Aquarell, LL2 was prepared for a veneer in order to cover the screw access channel. After sintering, the gingival areas were layered and the veneer created. The final finish was completed with ICE Zirkon Stains. Lastly, the bar was cemented into secondary Prettau® Zirconia bridge structure. Despite space limitations and unfortunate screw access angle we were able to achieve a solid and aesthetically pleasing restoration.



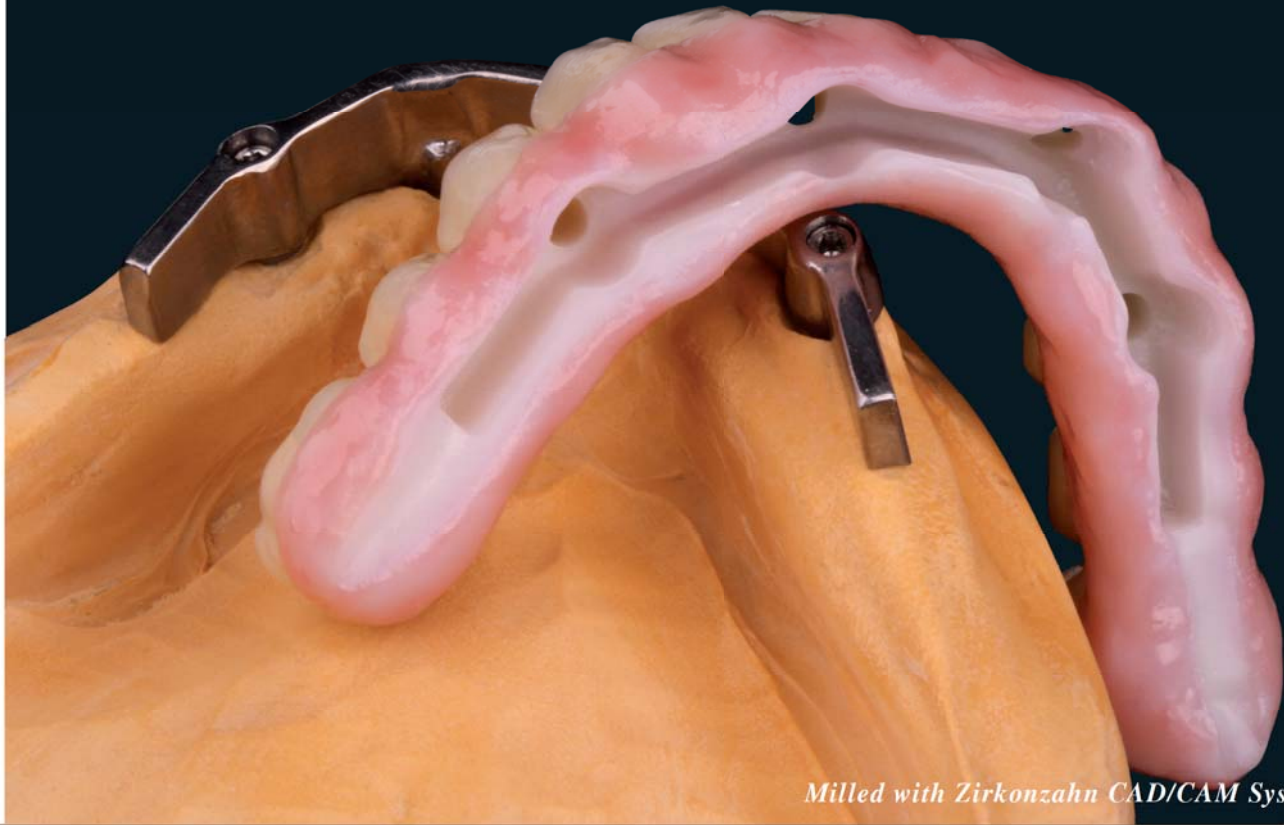
The Prettau® Bridge

Dr. Bryan Limmer - University of North Carolina

Georg Walcher, MDT and Jürgen Feierabend, DT - Zirkonzahn Education Center



Zirkonzahn®

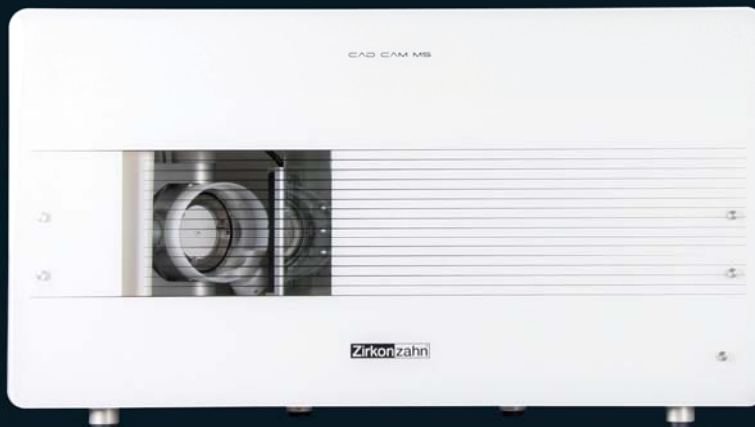


Milled with Zirkonzahn CAD/CAM System 5-TEC

HUMAN ZIRCONIUM TECHNOLOGY

ZIRKONZAHN Worldwide - Phone +39 0474 066 680 - info@zirkonzahn.com - www.zirkonzahn.com

ZIRKONZAHN USA Inc. - Phone +1 6784419419 - infousa@zirkonzahn.com - www.zirkonzahn.com



WEAA6745

All information is subject to change. Errors and omissions excepted. Version: 25.10.2012