

Zirkonzahn[®]

Human Zirconium Technology



100% PRETTAU[®] AESTHETICS - MADE BY CAD/CAM

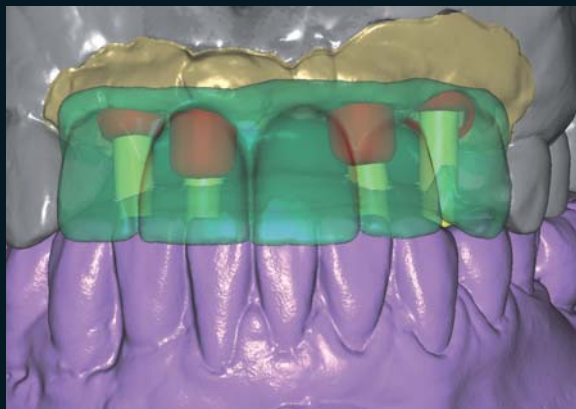
“Zirconia needs heroes“ Enrico Steger

Occlusally screw-retained anterior tooth bridge (from 12 - 23) on titanium bases

Our Zirkonzahn team USA has sent us a resin structure, which has been milled in TEMP Premium resin using the CAD/CAM system 5-TEC and which has already been tried in situ. The occlusal and interdental contacts were adapted and with the resin model we obtained the dimensions and the features that satisfied the patient at both aesthetic and functional level. A wax-up scan of the model was then created. Similarly, the customized titanium bases were virtually modified in order to optimize the insertion axis of the screw canals. The modelled structure was then milled in Prettau® Zirconia. The incisal margin was reduced, leaving an internal structure that resembled mamelons.

The structure was coloured using Colour Liquid Prettau® Aquarell colors and then sintered so as to subsequently add a light layer of transparent ceramic mass in order to improve the naturalness and aesthetics of the anterior teeth, as well as pink ceramic in the gingival area. The ceramic was glazed and then the customized titanium bases were cemented using dual light-curing cement.

CAD/CAM Software modules used: Wax-up, Occlusally Screwed Bridges, Prettau® (fully anatomic)



The Prettau® Bridge

Alessandro Cucchiaro (MDT) - Zirkonzahn Education Center USA, Atlanta



Zirkonzahn®

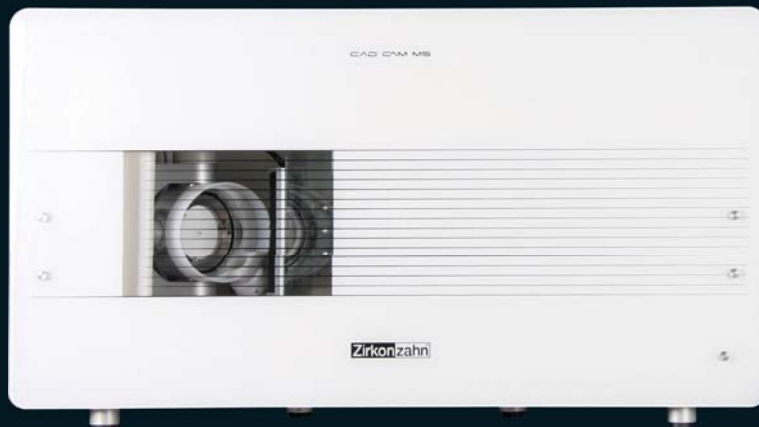


Milled with Zirkonzahn CAD/CAM System 5-TEC

HUMAN ZIRCONIUM TECHNOLOGY

ZIRKONZAHN Worldwide - Phone +39 0474 066 680 - info@zirkonzahn.com - www.zirkonzahn.com

ZIRKONZAHN USA Inc. - Phone +1 6784419419 - infousa@zirkonzahn.com - www.zirkonzahn.com



WEAA5444=

All information is subject to change. Errors and omissions excepted. Version: 28.09.2012