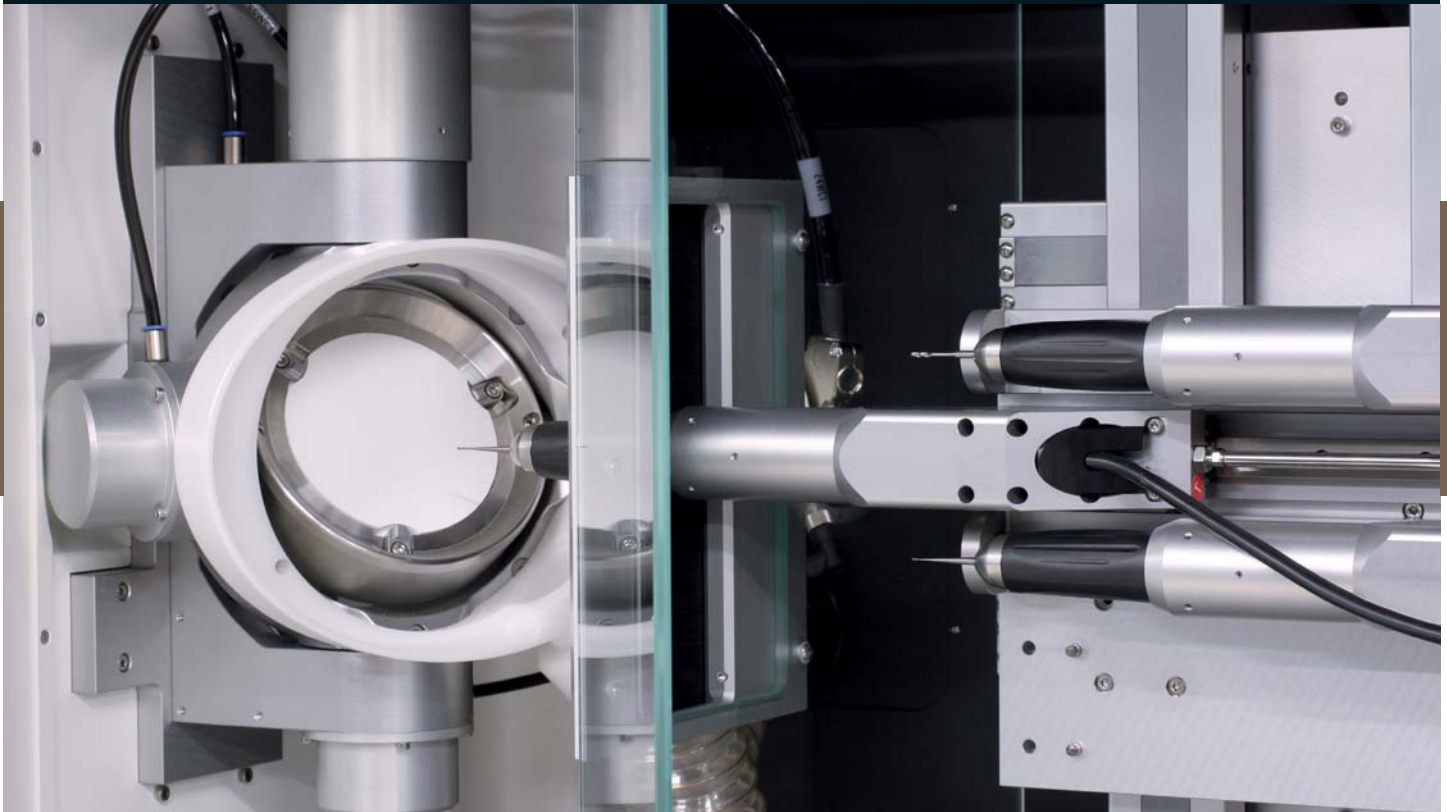


# Zirkonzahn®

*Human Zirconium Technology*



CAD/CAM SYSTEM S-TEC

## *CAD/CAM System 5-TEC*

- Suitable also for small laboratories
- Every single working step can be carried out in your own lab
- Open, future-proof system with modular technology

## *Advantages of 5+5 axes milling technology*

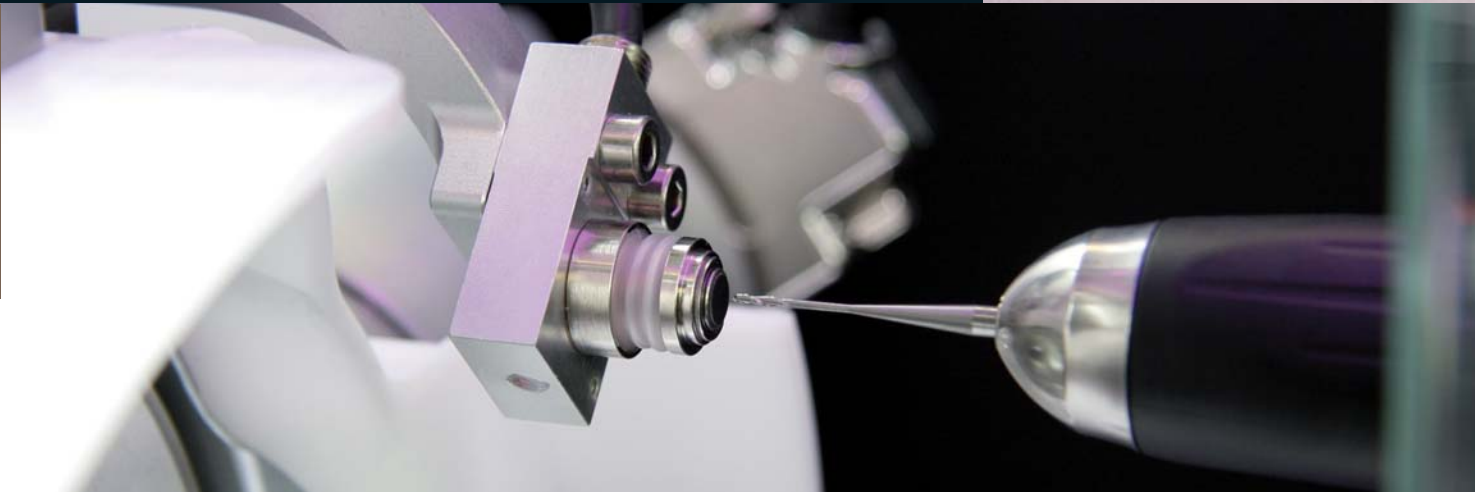
- Multi-purpose applications: for crowns and bridges, including occlusally screw-retained bridges, abutments, bars, attachments, inlays/onlays, bite splints, veneers.
- Milling of restorations with undercuts in all directions
- Modular concept design ensures that new parts can be upgraded individually

## *Materials possible for milling*

- Presintered zirconium dioxide and aluminium oxide
- Resin and wax
- In future, also metal and ceramics can be milled



*Milled with Zirkonzahn CAD/CAM  
System 5-TEC - 100 % Prettau Zirconia*

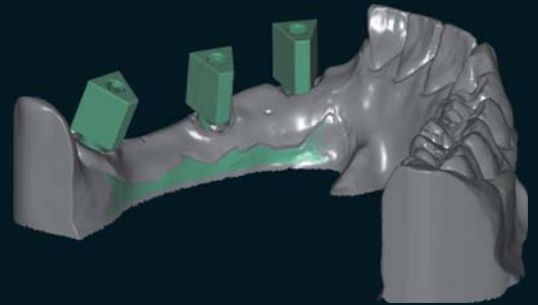


## *Precision achieved by Zirkonzahn technology*

- Milling tools are measured with an accuracy of up to 0,001 mm
- Self-calibration of the system ensures - among other things - the highest possible precision when defining the zero point (axes intersection point)

## *Scanner S600*

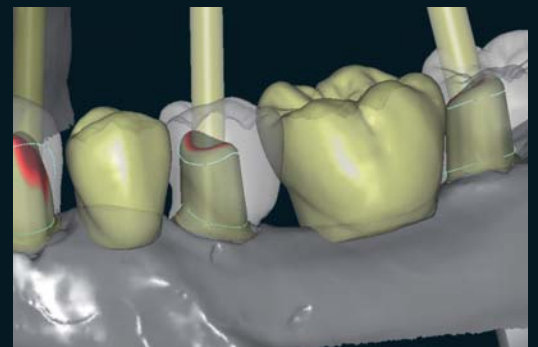
- Fully automated, optical strip-light scanner; precision:  $\leq 10 \mu\text{m}$
- Easy to handle thanks to operating guidance (scan assistant)
- Scannable objects: individual dies, full arch bridges, bite records, opposing as mushbite, wax-ups, veneers and abutments
- Model rotation of up to  $360^\circ$  and inclination of up to  $100^\circ$ : any aspect of the object can be captured
- Occlusion levels and lifting devices can be scanned
- Extra-large survey parameters allow for scanning the articulator, whole arches and mockup frame works (Double Scan)
- For an exact replication of the virtual articulator within the modelling software, the lab articulator can be calibrated in the scanner (axis position)



*Software Module CAD/CAM  
Occlusally Screwed Bridges*

## *Software*

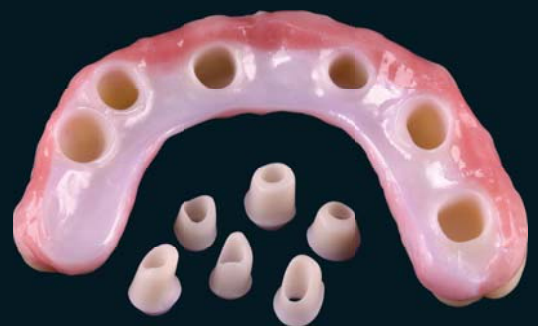
- User-friendly and purpose oriented: developed by a dental technician for dental technicians
- Simultaneous functions of scanning, modeling and milling
- Modular concept enables future integration of still unknown technologies
- Ongoing system updates thanks to continuous innovations and consistent software development (also in cooperation with our customers)



*Software Module CAD/CAM Abutments*

## *Additional software modules*

- *Software Module CAD/CAM Occlusally Screwed Bridges*
  - Models occlusally screw-retained bridges and bars with individual profiles
  - Enables free design of emergence-profiles under consideration of anatomic tooth shapes
  - Virtual, continuously growing library with implant and connector systems as well as additional tooth shapes
- *Software Module CAD/CAM Abutments*
  - Models individual abutments and their emergence profiles
  - Supports a variety of different implant systems
  - Creates abutments with simultaneous consideration of the secondary structure. After the forms are finished, both - abutments and secondary structure - can be milled simultaneously



*Milled with Zirkonzahn CAD/CAM System 5-TEC*

## COMPLETE CAD/CAM SYSTEM S-TEC

### System components:

- Computer driven 5-axes milling unit M5 with 2 milling handpieces and milling bur calibration
- Fully automated optical scanner S600
- Software package consisting of:  
Scan software, modeling software, milling software, archive software, nesting software and CAM software
- Personal computer with 16:10 widescreen display

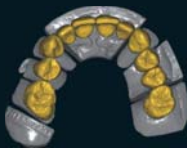


## Zirkonzahn® .Modellier - ADDITIONAL MODULES



### Inlay/Onlay

Module for Inlays/Onlays and Veneers



### Prettau (fully anatomic)

Module for full-anatomical designs (incl. reduction option)



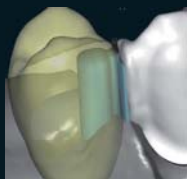
### Telescopic Crowns

Module for primary telescopic crowns



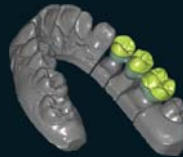
### Occlusally Screwed Bridges

Module for occlusally screwed bridges and crowns



### Attachment

Module for prefabricated attachments



### Overpress crowns and bridges

Module for 'press over' crown & bridgework



### Wax-up/Situ/Mirror imaging

Module for working with diagnostic wax-ups, situ-scans (Double Scan) and mirror imaging opposing arch scans with reference to scanned master model



### Bar

Module for custom bars



### Abutments

Module for abutments



### Virtual articulator

Module for articulated functional joint movements

ZIRKONZAHN World Wide - Tel +39 0474 066 680 - info@zirkonzahn.com - www.zirkonzahn.com



WEAA5425=

Specifications and delivery subject to change without notice